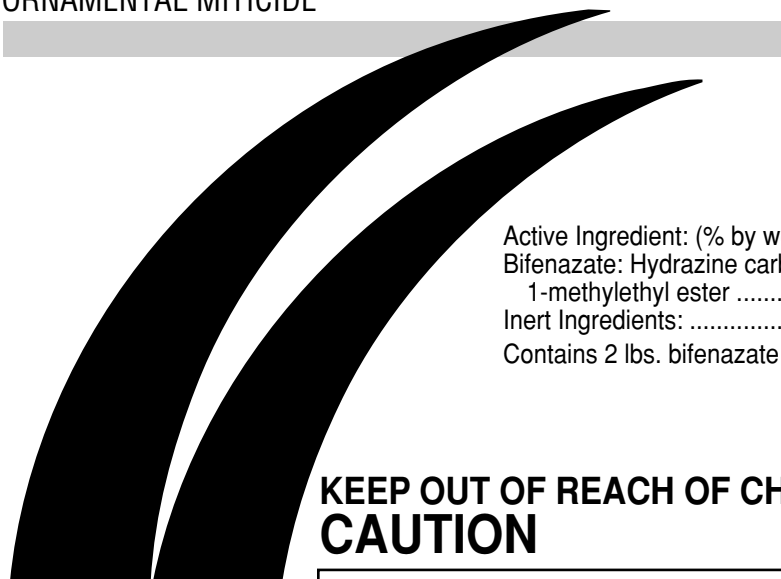


# Floramite® SC

ORNAMENTAL MITICIDE



Active Ingredient: (% by weight)  
Bifenazate: Hydrazine carboxylic acid, 2-(4-methoxy-[1,1-biphenyl]-3-yl)  
1-methylethyl ester ..... 22.6%  
Inert Ingredients: ..... 77.4%  
Contains 2 lbs. bifenazate per gallon.

Net contents:  
**1 quart**

## KEEP OUT OF REACH OF CHILDREN CAUTION

FIRST AID	
<b>IF SWALLOWED</b>	<ul style="list-style-type: none"><li>• Call poison control center or doctor immediately for treatment advice.</li><li>• Have person sip a glass of water if able to swallow.</li><li>• Do not induce vomiting unless told to do so by the poison control center or doctor.</li><li>• Do not give anything by mouth to an unconscious person.</li></ul>
HOT LINE NUMBER	
Have the product container or label with you when calling a poison control center or doctor, or going for treatment. You may also call the following telephone numbers for emergency medical treatment	
<b>CROMPTON EMERGENCY PHONE</b>	<b>800-292-5898</b>
<b>SAFETY DATA AND INFORMATION</b>	<b>203-573-3303</b>
<b>TRANSPORTATION EMERGENCY (CHEMTREC)</b>	<b>800-424-9300</b>

### PRECAUTIONARY STATEMENTS HAZARDS TO HUMANS AND DOMESTIC ANIMALS

#### CAUTION

Harmful if swallowed. Prolonged or frequently repeated skin contact may cause allergic reaction in some individuals. Wash thoroughly with soap and water after handling.

#### PERSONAL PROTECTIVE EQUIPMENT

**Applicators and Other Handlers Must Wear:** Long-sleeved shirt and long pants; shoes plus socks. Follow manufacturer's instructions for cleaning and maintaining PPE. If no such instructions for washables, use detergent and hot water. Keep and wash PPE separately from other laundry.

#### USER SAFETY RECOMMENDATIONS

Users should:

- Wash hands before eating, drinking, chewing gum, using tobacco, or using the toilet.
- Remove clothing immediately if pesticide gets inside. Then wash thoroughly and put on clean clothing.

#### ENVIRONMENTAL HAZARDS

This pesticide is toxic to fish. Do not apply directly to water, or to areas where surface water is present or to intertidal areas below the mean high water mark. Do not contaminate water when disposing of equipment washwaters. This product is toxic to bees exposed to direct treatment but residues on treated foliage are not toxic to bees. Do not apply this product while bees are actively visiting the treatment area.

#### PHYSICAL OR CHEMICAL HAZARDS

Do not use or store near heat or open flame.

**Crompton**  
Uniroyal Chemical

Crompton Manufacturing  
Company, Inc.  
Middlebury, CT 06749

EPA REG. NO. 400-508  
EPA EST. NO.  
009CM/062904

Crompton® and Uniroyal Chemical®  
are Registered Trademarks of a  
subsidiary of Crompton Corporation

www.cromptoncorp.com

## DIRECTIONS FOR USE

It is a violation of Federal law to use this product in a manner inconsistent with its labeling.

Do not apply this product through any type of irrigation system.

Do not apply this product in a way that will contact workers or other persons, either directly or through drift. Only protected handlers may be in the area during application. For any requirements specific to your State or Tribe, consult the agency responsible for pesticide regulation.

### AGRICULTURAL USE REQUIREMENTS

Use this product only in accordance with its labeling and with the Worker Protection Standard, 40 CFR Part 170. This Standard contains requirements for the protection of agricultural workers on farms, forests, nurseries, and greenhouses, and handlers of agricultural pesticides. It contains requirements for training, decontamination, notification, and emergency assistance. It also contains specific instructions and exceptions pertaining to the statements on this label about personal protective equipment (PPE), notification to workers and restricted-entry intervals. The requirements in this box only apply to uses of this product that are covered by the Worker Protection Standard.

Do not enter or allow worker entry into treated areas during the restricted entry interval (REI) of 12 hours.

PPE required for early entry to treated areas that is permitted under the Worker Protection Standard and that involves contact with anything that has been treated, such as plants, soil, or water, is:

- coveralls
- shoes plus socks
- chemical-resistant gloves made of any waterproof material

### NON-AGRICULTURAL USE REQUIREMENTS

The requirements in this box apply to uses of this product that are NOT within the scope of the Worker Protection Standard for agricultural pesticides (40 CFR Part 170). The WPS applies when this product is used to produce agricultural plants on farms, forests, nurseries or greenhouses.

Keep unprotected persons out of treated areas until sprays have dried.

## GENERAL INFORMATION

FLORAMITE SC is a selective miticide for the control of a variety of mite pests on the following plants:

- All ornamental plants, including bedding plants, flowering plants, foliage plants, bulb crops, perennials, trees and shrubs.
- All non-bearing fruit trees which will not bear fruit for a minimum of 12 months.
- Greenhouse tomatoes, varieties greater than 1" in diameter when mature.

Except for applications to tomatoes, which is restricted to use in greenhouses only, FLORAMITE SC can be used in the following areas where these plants are grown and/or maintained in containers or in the ground:

- Greenhouses and shadehouses
- Nurseries, including Christmas tree/conifer plantations
- Landscapes
- Interiorscapes
- Residences
- Public, commercial, industrial and institutional areas
- Recreational sites, such as campgrounds, golf courses, parks and athletic fields
- Rights of way and other easements

When used as directed and applied to the foliage, FLORAMITE SC provides quick knockdown through contact activity, and long residual control. Due to its unique chemistry, mode of action and selective nature, FLORAMITE SC is relatively inactive against beneficial /

predacious mites and insects, and therefore is compatible with IPM and resistance management programs.

## MIXING INSTRUCTIONS

Fill the spray tank with 1/2 the desired amount of water. Then add the required amount of FLORAMITE SC with agitation running to fully disperse the product. Then fill the tank with the remaining amount of required water.

FLORAMITE SC has been shown to degrade rapidly when mixed and stored with alkaline water of high temperature (122°F). To prevent degradation under alkaline conditions, solutions of FLORAMITE SC must be used promptly. Alternatively, a commercially available buffering adjuvant can be added to the solution to reduce the pH to a neutral / acidic range.

**Compatibility:** To obtain broad spectrum insect control, FLORAMITE SC can be tank-mixed with other insecticide products. However, due to variations in water quality, e.g., hardness and pH, it is required that users conduct small scale trials under local conditions to ensure compatibility prior to any large scale use.

**Restrictions:** Tank mixtures are permitted only in those states where the tank mix partner is registered. When tank mixing, follow the label directions for the most restrictive of label precautions and limitations.

## USE RATES AND RECOMMENDATIONS

Mix 4 to 8 fluid ozs. FLORAMITE SC in 100 gals. of water (1/4 - 1/2 tsp./gal) and apply as a full coverage spray to the foliage using a volume of 1-4 qts. of final solution per 100 sq.ft. (or 100-400 gals. per acre). Actual spray volume will vary depending on the size of plants being treated. Application should be made as soon as mites appear and will provide residual control for up to 28 days. Use the low rate for preventative applications or where mite infestations are light. The higher rate may be required for heavy infestations or for extended residual control. For optimum coverage of ornamentals with hard to wet foliage, an adjuvant can be added to the FLORAMITE SC/ water solution. Those found to be effective are Silwet 77® or Sylgard 309® at 4 oz. per 100 gallons of water. Users should test safety and compatibility of all adjuvants prior to commercial use. Do not use adjuvants in solutions applied to greenhouse tomatoes.

When used as a directed, FLORAMITE SC is effective for the control of a variety of mites species, especially spider mites, red mites and grass mites. NOTE: It is not effective against rust mites, broad mites and flat mites. FLORAMITE SC is primarily active on the motile stages of mites, but also has ovicidal activity against spider mites (*Tetranychus* species). Common mite species controlled by FLORAMITE SC include:

COMMON NAME	SCIENTIFIC NAME
Two spotted spider mite	<i>Tetranychus urticae</i> (Koch)
Pacific mite	<i>Tetranychus pacificus</i> (McGregor)
Strawberry mite	<i>Tetranychus turkestanii</i>
European red mite	<i>Panonychus ulmi</i> (Koch)
Citrus red mite	<i>Panonychus citri</i> (McGregor)
Clover mite	<i>Bryobia praetiosa</i> (Koch)
Southern red mite	<i>Oligonychus ilicis</i> (McGregor)
Spruce spider mite	<i>Oligonychus ununguis</i> (Jacobi)
Bamboo spider mite	<i>Schizotetranychus celarius</i> (Banks)
Lewis mite	<i>Eotetranychus lewisi</i>

## RESTRICTIONS:

For greenhouse tomatoes, do not apply within 3 days of harvest. Do not make more than two (2) applications of FLORAMITE SC per crop per year.

Do not apply more than 32 fluid ozs. per acre, per year.

Apply FLORAMITE SC by ground equipment such as, but not limited to, compressed air sprayers, hydraulic sprayers, ground boom sprayers, air blast sprayers, hose-end sprayers. Do not apply by aerial application.

## STRATEGIES FOR RESISTANCE MANAGEMENT

FLORAMITE SC, when used as directed, combines high activity on mites with selectivity to beneficial / predacious mites and insects. In addition, the unique chemistry of FLORAMITE SC provides a means of controlling mites which have developed resistance to more commonly used products. These properties can result in fewer miticide / insecticide applications as well as general reduction in the problems caused by resistance.

To reduce selection pressure which can lead to the development of resistance, FLORAMITE SC should be used in moderation. To help achieve this, the following strategies are recommended:

- Incorporate IPM techniques into your insect control program.
- Ensure thorough spray coverage to all foliage.
- Scout regularly and apply FLORAMITE SC as soon as infestations are observed. Do not wait until large populations have established.
- Always apply FLORAMITE SC at the recommended rates and according to label recommendations.
- Apply only one application of FLORAMITE SC before rotating to products of an alternative chemical class.
- Use at least two alternative products between treatments of FLORAMITE SC.
- Use FLORAMITE SC in conjunction with biological control organisms available for mite control. FLORAMITE SC when used as directed, does not adversely affect populations of beneficial / predacious mites and insects, including:

Predatory Mites	Beneficial Insects
<i>Phytoseiulus persimilis</i>	<i>Chrysoperla carnea</i> (common green lacewing)
<i>Neoseiulus spp.</i>	<i>Aphidius colemani</i>
<i>Typhlodromus spp.</i>	<i>Aphidoletes aphidomyza</i>
<i>Amblyseius spp.</i>	<i>Orius insidiosus</i> (insidious pirate bug)
<i>Zetzellia mali</i>	<i>Coccinella septempunctata</i>
<i>Iphiseius degenerans</i>	<i>Hippodamia convergens</i>
	<i>Stethorus punctum</i>
	<i>Diglyphus isaea</i>
	<i>Eretmocerus eremicus</i>
	<i>Cotesia marginiventris</i>

The use of these organisms in conjunction or alternation with FLORAMITE SC is encouraged as a means of reducing the number of chemical applications.

## PLANT TOLERANCE

Neither the manufacturer nor the seller has determined whether or not FLORAMITE SC can be used safely on all ornamental plants. FLORAMITE SC has been tested on a variety of ornamental plants with no phytotoxicity observed at label rates. However, all plant species and their varieties and cultivars have not been tested with possible tank mix combinations, sequential pesticide treatments and adjuvants and surfactants. Therefore, prior to any large scale application to ornamental plants, the user should determine the safety of FLORAMITE SC by testing a small number of the plant cultivar to be treated at the recommended rates to ensure that phytotoxic response will not occur. The end user assumes all risks arising out of application in a manner inconsistent with its labeling.

## STORAGE AND DISPOSAL

Do not contaminate water, food or feed by storage or disposal.

**PESTICIDE STORAGE:** Store in a dry location.

**PESTICIDE DISPOSAL:** Wastes resulting from the use of this product may be disposed of on site or at an approved waste disposal facility.

**CONTAINER DISPOSAL:** Triple rinse (or equivalent). Then offer for recycling or reconditioning, or puncture and dispose of in a sanitary landfill, or by other procedures approved by state and local authorities.

**IMPORTANT NOTICE**—Seller warrants that this product conforms to its chemical description and is reasonably fit for the purposes stated on the label when used in accordance with the directions and instructions specified on the label under normal conditions of use, but neither this warranty nor any other warranty of merchantability or fitness for a particular purpose, express or implied, extends to the use of this product contrary to label instructions, or under abnormal conditions, or under conditions not reasonably foreseeable to seller, and buyer assumes the risk of any such use.

®FLORAMITE SC is a Registered Trademark of Crompton Corporation  
©Copyright 2004, Crompton Corporation